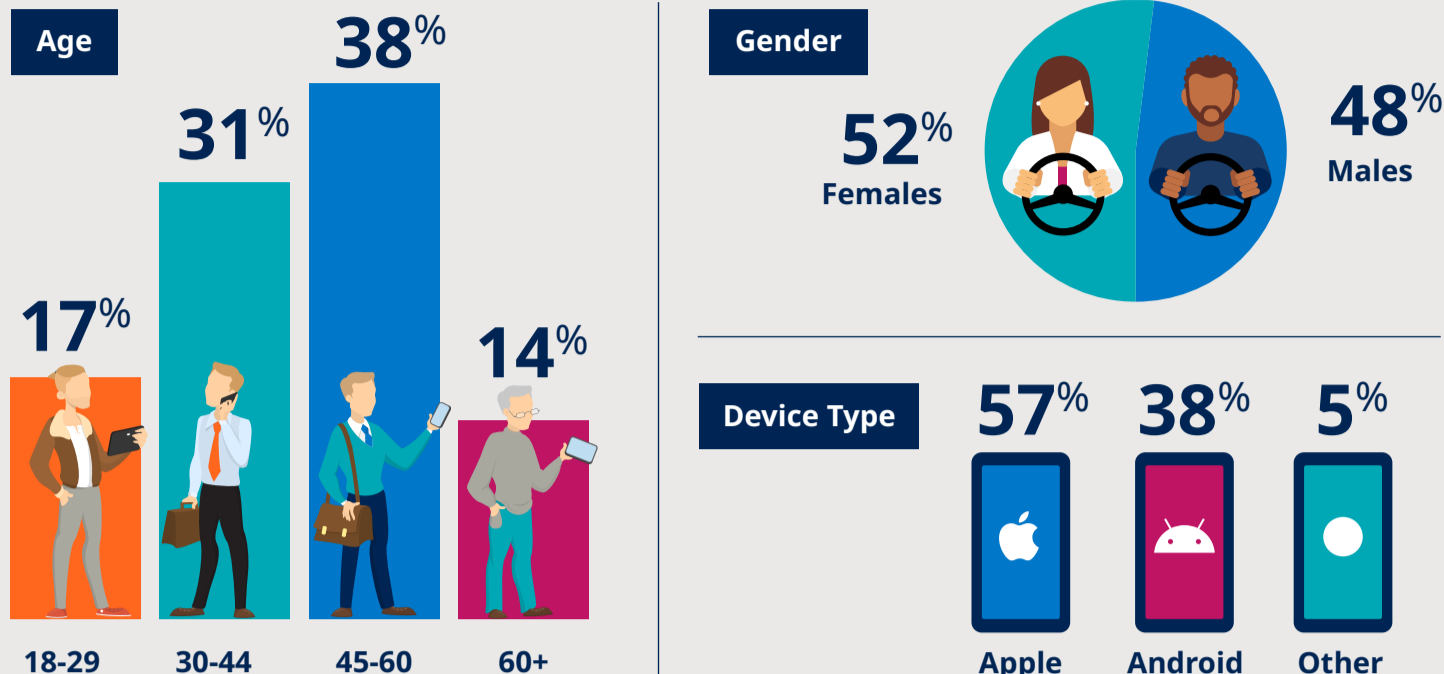


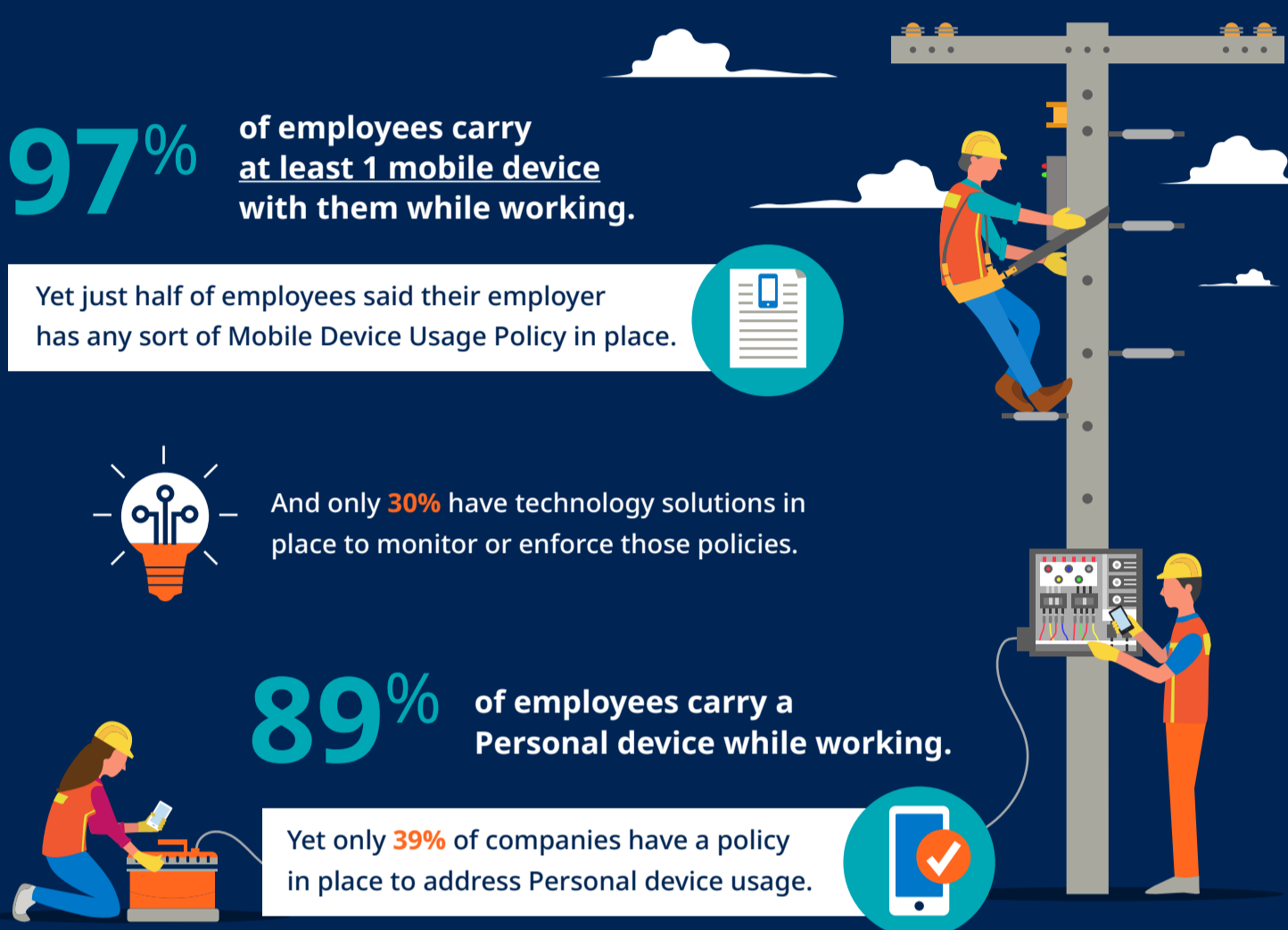
Distracted Driving with a Connected Workforce

In conjunction with Distracted Driving Awareness Month, which is recognized annually in April, TRUCE polled over 1,500 adults about their work-related mobile device usage habits. The survey also looked at whether or not their employers have policies in place to define and enforce safe and appropriate use.

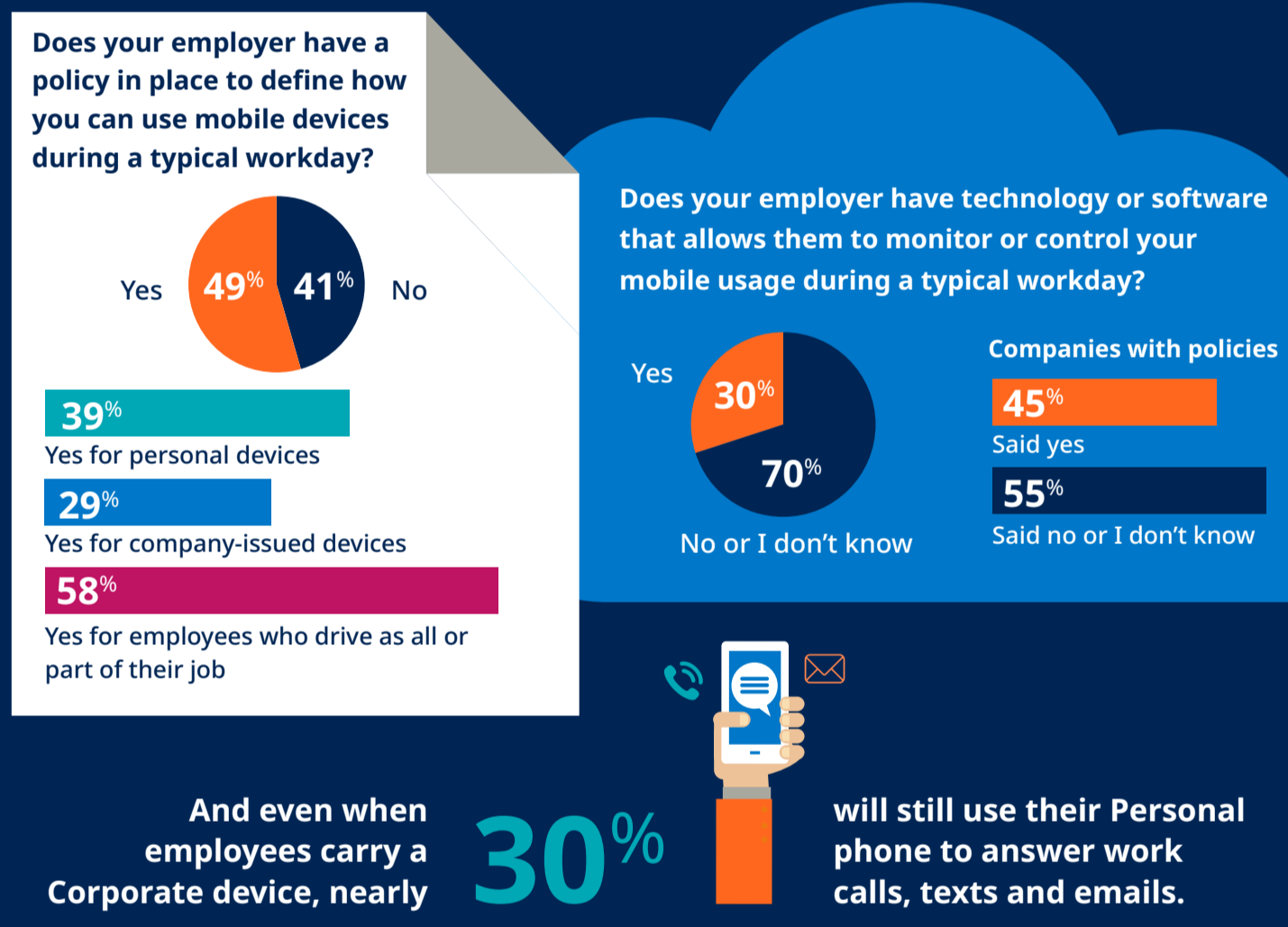
At-a-Glance



Gearing Up for Work



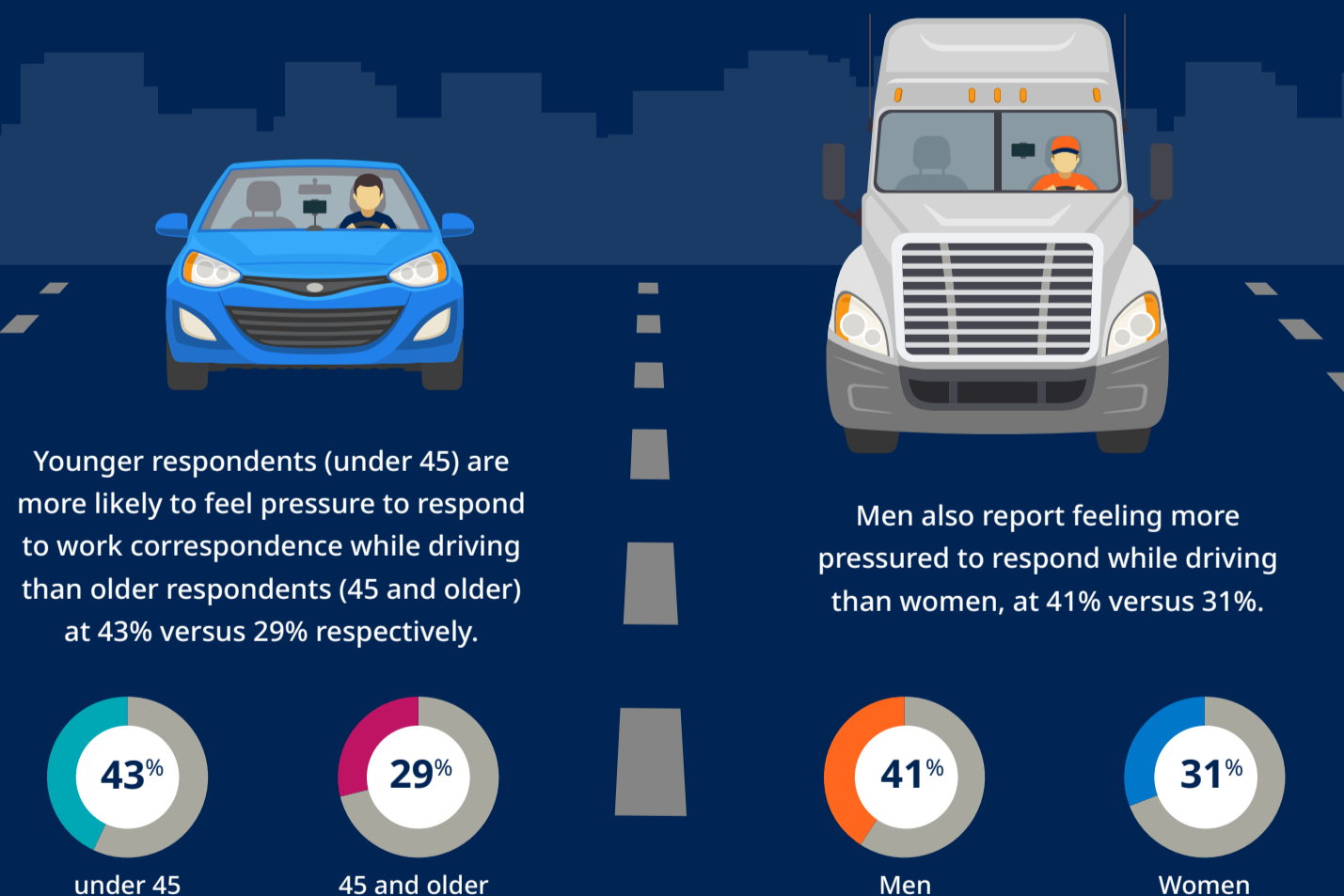
Enforcing appropriate use ... or not.



In a tight labor market, it's important to do whatever possible to attract and retain talent. Explore [5 Reasons to Enable Personal Use of Corporate Devices](#).

Working at the Wheel

72% of those who drive as a daily part of their job (not including commuters) said they feel pressured to respond to work-related calls and texts while driving.



Mobile Usage for Work Tasks Continues to Climb

65% of respondents said at least some, if not most, of their work tasks (other than voice calls, texting or email) can now be completed using apps on a mobile device. **18%** say that specific tasks must now be completed on their mobile device.



For more information go to trucesoftware.com